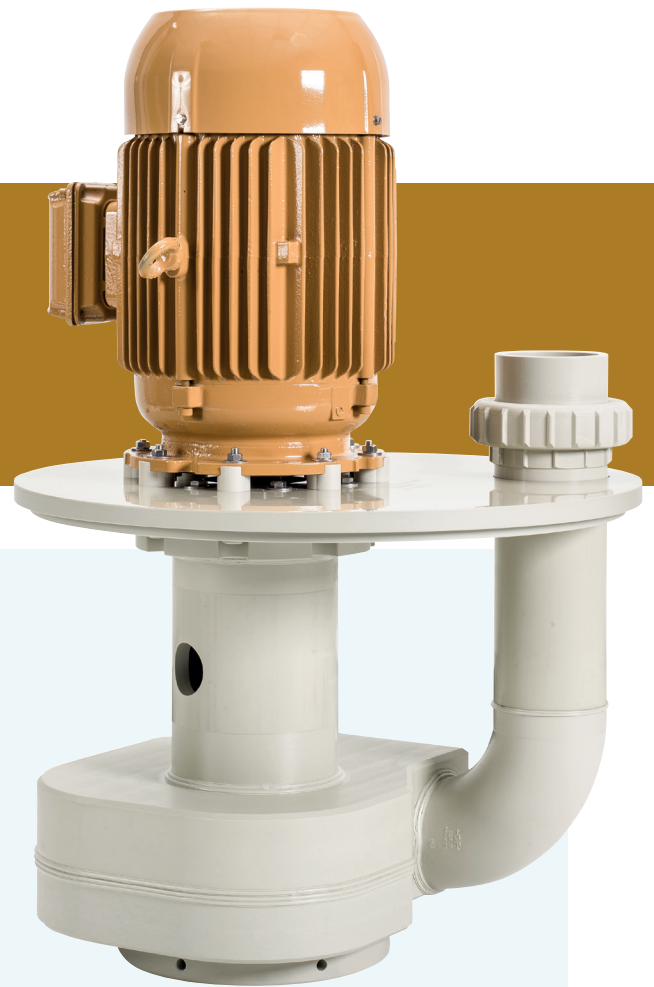




VERTICAL IMMERSION PUMPS

Series D33 - D35 - D39 - PP



D35-130/14-400-PP

40 - 180 m³/h

667 - 3000 l/min

Vertical single stage centrifugal immersion pump, sealless and dry-run safe for non-pressurized tank application.

The D33-D35-D39 series combines optimized hydraulic efficiency with a robust, compact and reliable construction, resulting in maximum installation uptime and a long service life, running 24/7.

Features

- Machined from Simona® AlphaPlus™ high performance PP
- Very easy, leak free, in-tank installation
- Easy connection above cover
- Including complete +GF+ union end
- Free turning shaft, no seal or bearing, can run dry
- Impeller locked (no damage with wrong rotation direction)
- Self priming when flooded
- EPDM elastomers
- Max. temperature 80°C
- High quality European, purpose designed electric motor:
 - 3 phase, 50 Hz, 1450 rpm, IP55, multi voltage
 - with double layer 2C chemical resistant coating
 - full length SS shaft with PP protection pipe
 - suitable for frequency drive control
 - built-in PTC-thermistor
 - stainless steel fasteners
 - CE certified and UL listed

Options

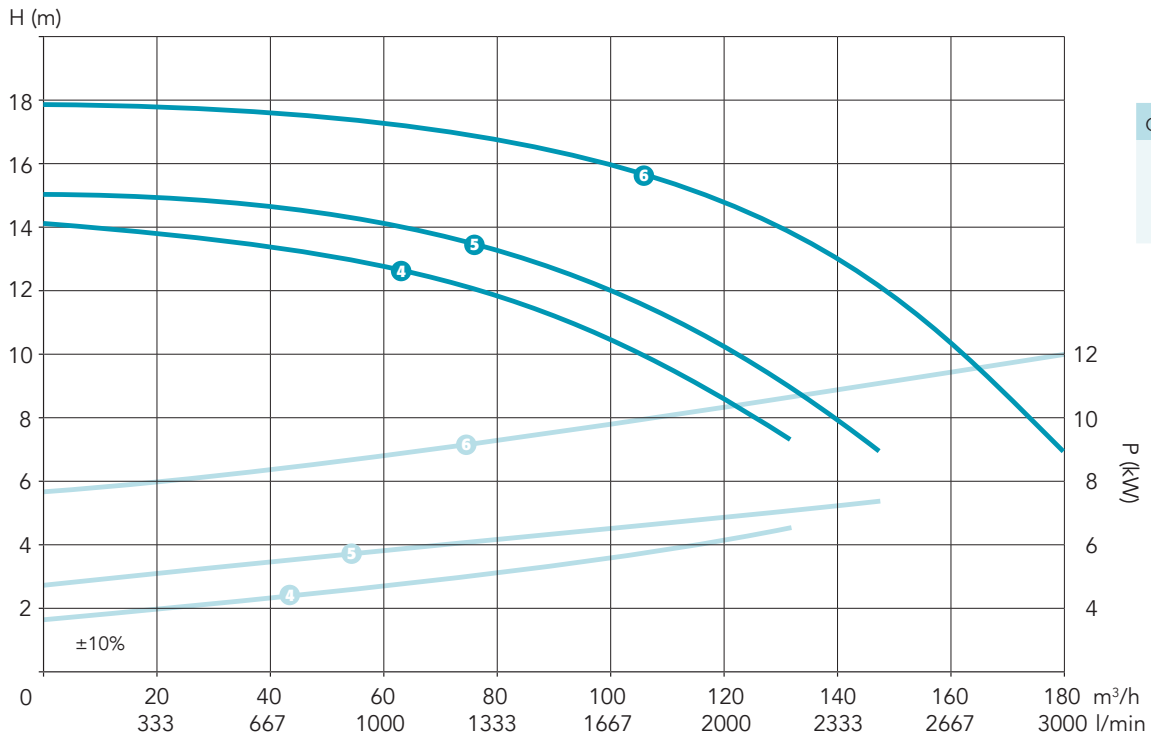
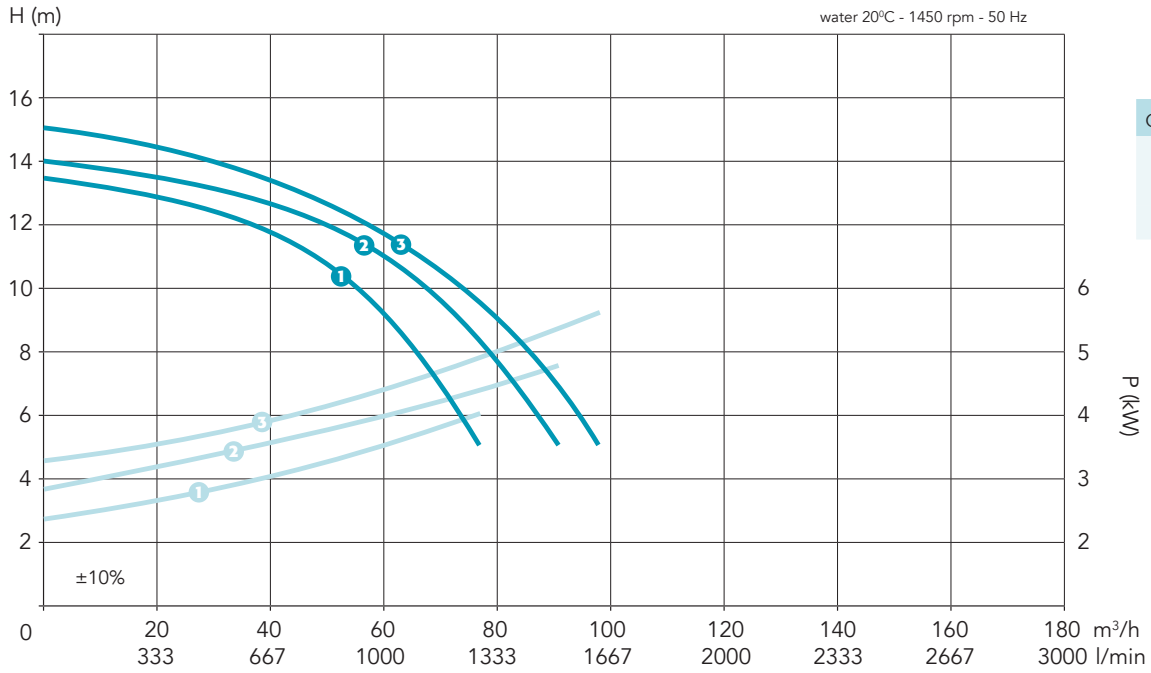
- Customised mounting plate
- Mounting plate sealing
- D39 immersion length 650 mm
- Suction extension pipe
- Suction strainer
- Flange connection
- Union socket in PVC or CPVC
- Specific elastomers
- Vapour lock
- Fixation securing the pump
- Electric motor options:
 - EMC compatibility
 - motor mounted frequency drive
 - other RAL colours

Type	Material	Q max (m ³ /h)	H max (m)	Out (d/DN)	Immersion length (mm)
D33-90/14	PP	70	13,5	90/75	400
D33-100/14		90	14	90/75	
D33-110/16		98	15	90/75	
D35-130/14		132	14	110/90	
D35-150/15		143	15	110/90	
D39-180/17		180	17	110/90	

Motor		I nom. (A)
kW	HP	400V-50Hz
3	4	6
4	5½	8,35
5,5	7½	10,7
7,5	10	15
15	20	28,9

all motors fit, selection based on duty point and application

Selection example: D35-130/14-400-PP



Dimensions

Type	"M" (mm)
D33-90/14	423
D33-100/14	423
D33-110/16	423
D35-130/14	434
D35-150/15	434
D39-180/17	429

Motor		"L" (mm)
kW	HP	
3	4	384
4	5½	425
5,5	7½	490
7,5	10	495
15	20	609

